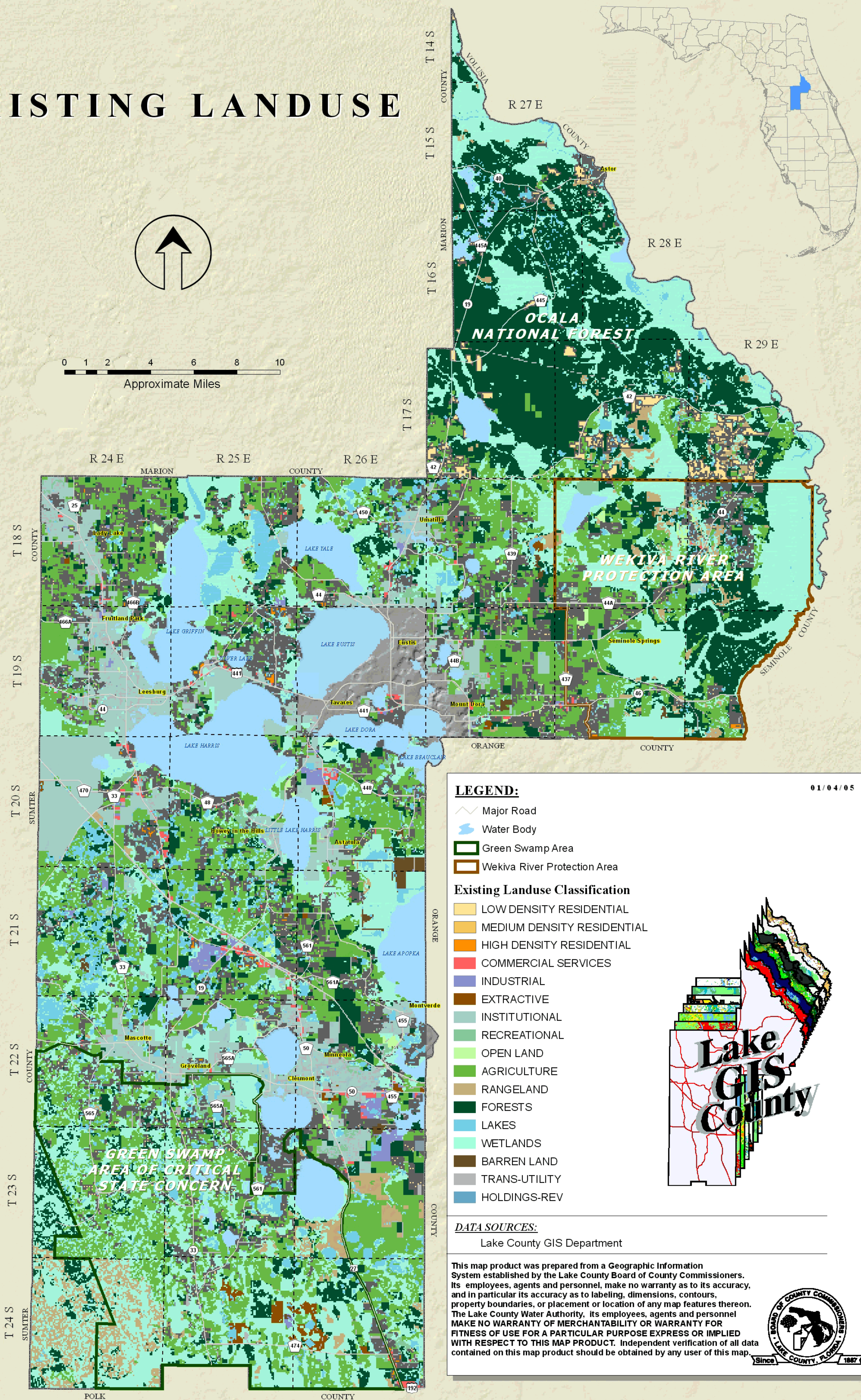
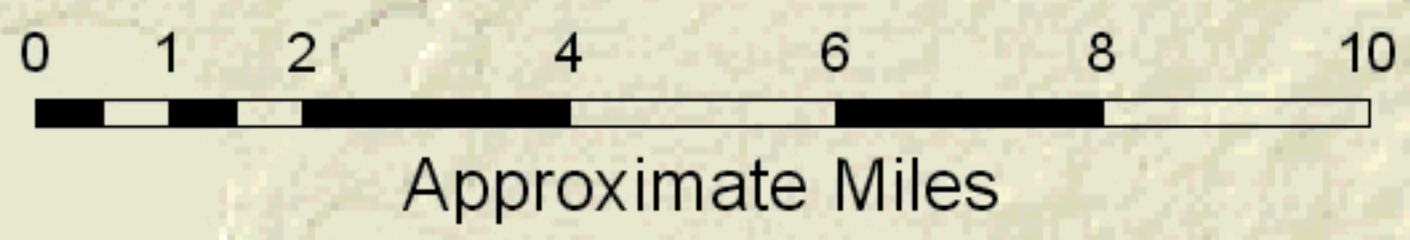
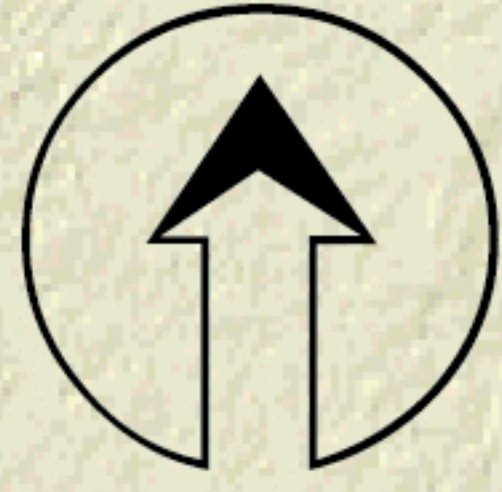


LAKE COUNTY, FLORIDA

EXISTING LANDUSE



LEGEND:

- Major Road
- Water Body
- Green Swamp Area
- Wekiva River Protection Area

Existing Landuse Classification

- LOW DENSITY RESIDENTIAL
- MEDIUM DENSITY RESIDENTIAL
- HIGH DENSITY RESIDENTIAL
- COMMERCIAL SERVICES
- INDUSTRIAL
- EXTRACTIVE
- INSTITUTIONAL
- RECREATIONAL
- OPEN LAND
- AGRICULTURE
- RANGELAND
- FORESTS
- LAKES
- WETLANDS
- BARREN LAND
- TRANS-UTILITY
- HOLDINGS-REV

DATA SOURCES:

Lake County GIS Department

This map product was prepared from a Geographic Information System established by the Lake County Board of County Commissioners. Its employees, agents and personnel, make no warranty as to its accuracy, and in particular its accuracy as to labeling, dimensions, contours, property boundaries, or placement or location of any map features thereon. The Lake County Water Authority, its employees, agents and personnel MAKE NO WARRANTY OF MERCHANTABILITY OR WARRANTY FOR FITNESS OF USE FOR A PARTICULAR PURPOSE EXPRESS OR IMPLIED WITH RESPECT TO THIS MAP PRODUCT. Independent verification of all data contained on this map product should be obtained by any user of this map.



01/04/05

