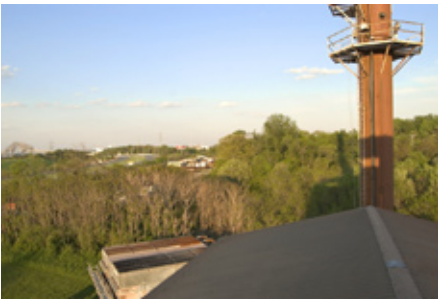


CURTIS BAY ENERGY

MEDICAL WASTE IN: CLEAN ENERGY OUT



∩ WHO WE ARE

Curtis Bay Energy, the nation's leading waste-to-energy medical waste processing facility, is dedicated to providing hospitals and medical professionals with the safest, most effective and most economical method for managing regulated medical waste.

∩ OUR MISSION

We aim to serve society's current medical needs while protecting its future health.

∩ OUR COMMITMENT

We operate our energy-generating plant with stringent environmental oversight. We support medical waste stream separation and encourage recycling through education programs. We invest in the ongoing research and development of particle filtering technologies, which will lead to new environmental standards for all thermal oxidation industries.

∩ WASTE-TO-ENERGY

A key component of Curtis Bay Energy's environmental strategy is to harness the energy created as a by-product of incineration, thereby turning the act of medical waste destruction to productive use. Curtis Bay Energy captures steam created during the incineration process and turns it into power. This indirectly reduces total emissions in the region by preserving natural resources that would otherwise be consumed by businesses to generate power. Curtis Bay Energy, a pioneer in its field, is the region's only waste-to-energy medical waste incinerator.



Incineration is the most effective and reliable way to destroy pathogens present in medical waste.

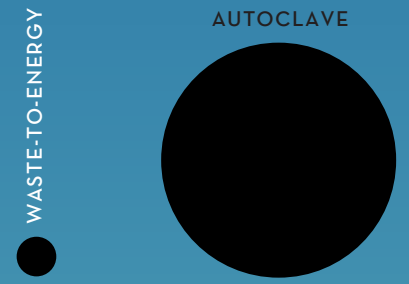
WASTE REDUCTION

Curtis Bay Energy reduces the volume of medical waste by about 90 percent and reduces the weight by about 75 percent. In contrast, medical waste treated in autoclaves - which use steam and heat to sterilize medical waste - does not sustain such significant reductions in weight or volume. After being processed in an autoclave, treated waste may be sent to a landfill or to a municipal waste incinerator, which is not subject to the same stringent emissions restrictions that govern medical waste incinerators. Autoclaving is a significantly less reliable method than incineration for sterilizing medical waste. Emissions at autoclave facilities are not regulated.

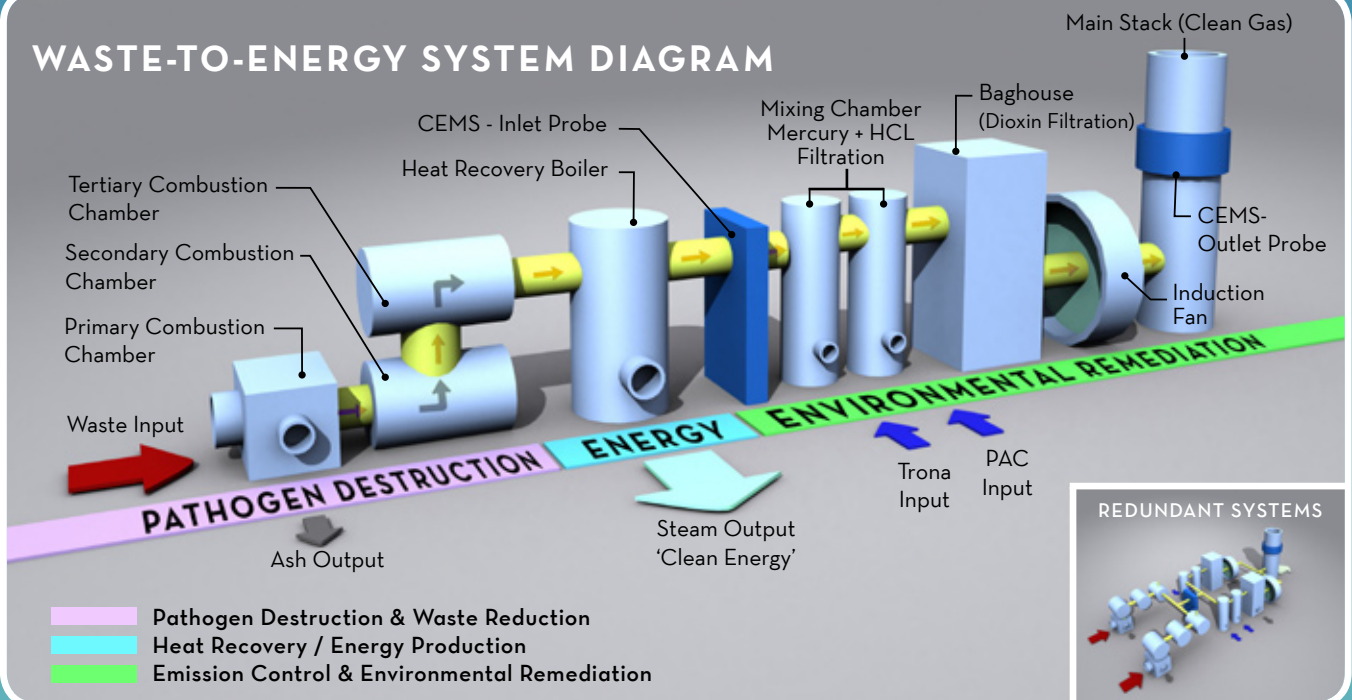


EMISSIONS CONTROL

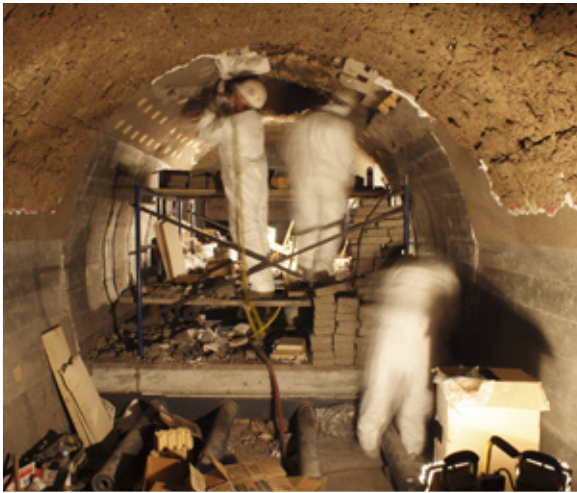
Autoclave technology produces 35 times as much atmospheric emissions as waste-to-energy technology when transportation, landfill and power consumption effects are included. Curtis Bay Energy maintains average mercury and dioxin emissions far below state and federal limits. Our facility has the lowest dioxin emissions of any medical incinerator in the country. We have reduced mercury emissions by more than 90 percent. We are currently working with a leader in emissions control technology to develop equipment that will further limit mercury emissions and allow mercury to be recaptured and recycled for industrial use.



WASTE-TO-ENERGY SYSTEM DIAGRAM







SETTING NEW STANDARDS

Curtis Bay Energy is committed to demonstrating how a state-of-the-art waste-to-energy facility can use controlled combustion to reduce medical waste in a manner that is clean and safe for the communities it serves, while creating energy and reducing landfill use.

Our facility operates with a level of oversight that is unparalleled in the medical waste industry. CBE is equipped with continuous monitoring devices that track emissions at several points along the waste-to-energy process. Continuous monitoring is not required by law, but allows Curtis Bay Energy to identify and respond to potential emissions challenges.

LEADING THE INDUSTRY

We are environmentalists. We firmly believe that waste-to-energy, when properly structured and coupled with optimized energy recovery, is the safest and best environmental solution for disposing of regulated medical waste.

Certain categories of medical waste, by law, must be destroyed by incineration to prevent the spread of infectious diseases. Incineration technology is the only method of medical waste disposal that ensures complete destruction of harmful pathogens such as prions, the particles that cause spongiform encephalopathies - the family of illnesses that include Mad Cow Disease. The National Institute of Health requires that all regulated medical waste generated at its facilities be destroyed via incineration.

COMMITTED TO THE FUTURE

Curtis Bay Energy is committed to operating at a lower emissions rate than any other processing facility in the country handling similar materials. We regularly evaluate and have funded the development of new combustion particle filtering methods in an effort to help set new emissions standards for waste incineration. To date, CBE is the only regulated medical waste processing facility in North America to use Remedia emission filtration technology, which converts dioxins/furans into products of combustion - carbon dioxide and water.

Furthermore, as a waste-to-energy facility, we turn the act of medical waste destruction to productive use. Curtis Bay Energy captures steam created during the incineration process and turns it into power. By harnessing this superheated steam, we are creating 'renewable' energy that is either used at Curtis Bay Energy or sold to neighboring businesses.



∩ WORKING TOGETHER

Education: We offer training sessions with hospitals and institutions on the importance of separating items containing mercury and other hazardous substances from the rest of their medical waste.

Transparent Operation: We are committed to working with our local community and environmental groups to address their concerns while providing an important service to the region's hospitals and medical institutions. We are committed to running Curtis Bay Energy as a transparent operation.

Open Communication: We actively pursue conversations with groups that have expressed concern about the environmental effects of the waste-to-energy process, which we believe produces a better long-term environmental outcome than other methods of disposing medical waste.

Community Revitalization: We are eager to be partners in community revitalization. We have funded community recycling education programs and are eager to sponsor other efforts to improve our neighborhood and safeguard the environment.

Recycling: Curtis Bay Energy actively enforces paper and cardboard recycling in its own facility and has initiated a program to help hospitals segregate and recycle mercury-containing fluorescent light bulbs

**CURTIS BAY
ENERGY**

3200 Hawkins Point Road
Baltimore, Maryland 21226
USA

Tel. 410.354.3228

Fax. 410.354.3591

info@cutrisbayenergy.com
www.curtisbayenergy.com

