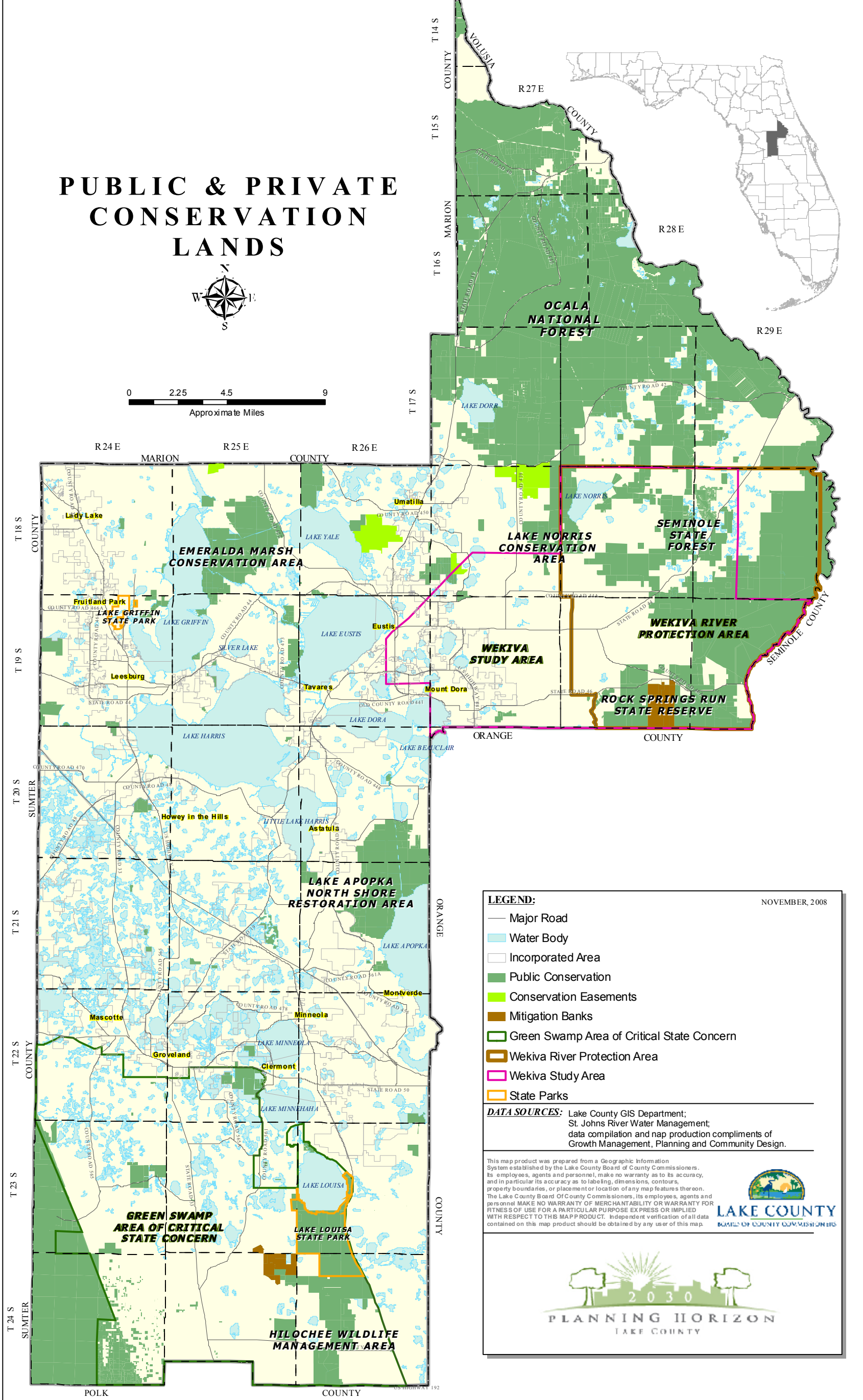
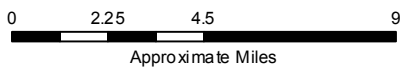


COMPREHENSIVE PLAN 2030

LAKE COUNTY FLORIDA

PUBLIC & PRIVATE CONSERVATION LANDS



LEGEND: NOVEMBER, 2008

- Major Road
- Water Body
- Incorporated Area
- Public Conservation
- Conservation Easements
- Mitigation Banks
- Green Swamp Area of Critical State Concern
- Wekiva River Protection Area
- Wekiva Study Area
- State Parks

DATA SOURCES: Lake County GIS Department; St. Johns River Water Management; data compilation and map production compliments of Growth Management, Planning and Community Design.

This map product was prepared from a Geographic Information System established by the Lake County Board of County Commissioners. Its employees, agents and personnel, make no warranty as to its accuracy, and in particular its accuracy as to labeling, dimensions, contours, property boundaries, or placement or location of any map features thereon. The Lake County Board of County Commissioners, its employees, agents and personnel MAKE NO WARRANTY OF MERCHANTABILITY OR WARRANTY FOR FITNESS OF USE FOR A PARTICULAR PURPOSE EXPRESS OR IMPLIED WITH RESPECT TO THIS MAP PRODUCT. Independent verification of all data contained on this map product should be obtained by any user of this map.

FUTURE LAND USES MAP SERIES