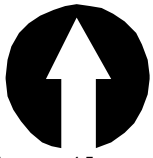


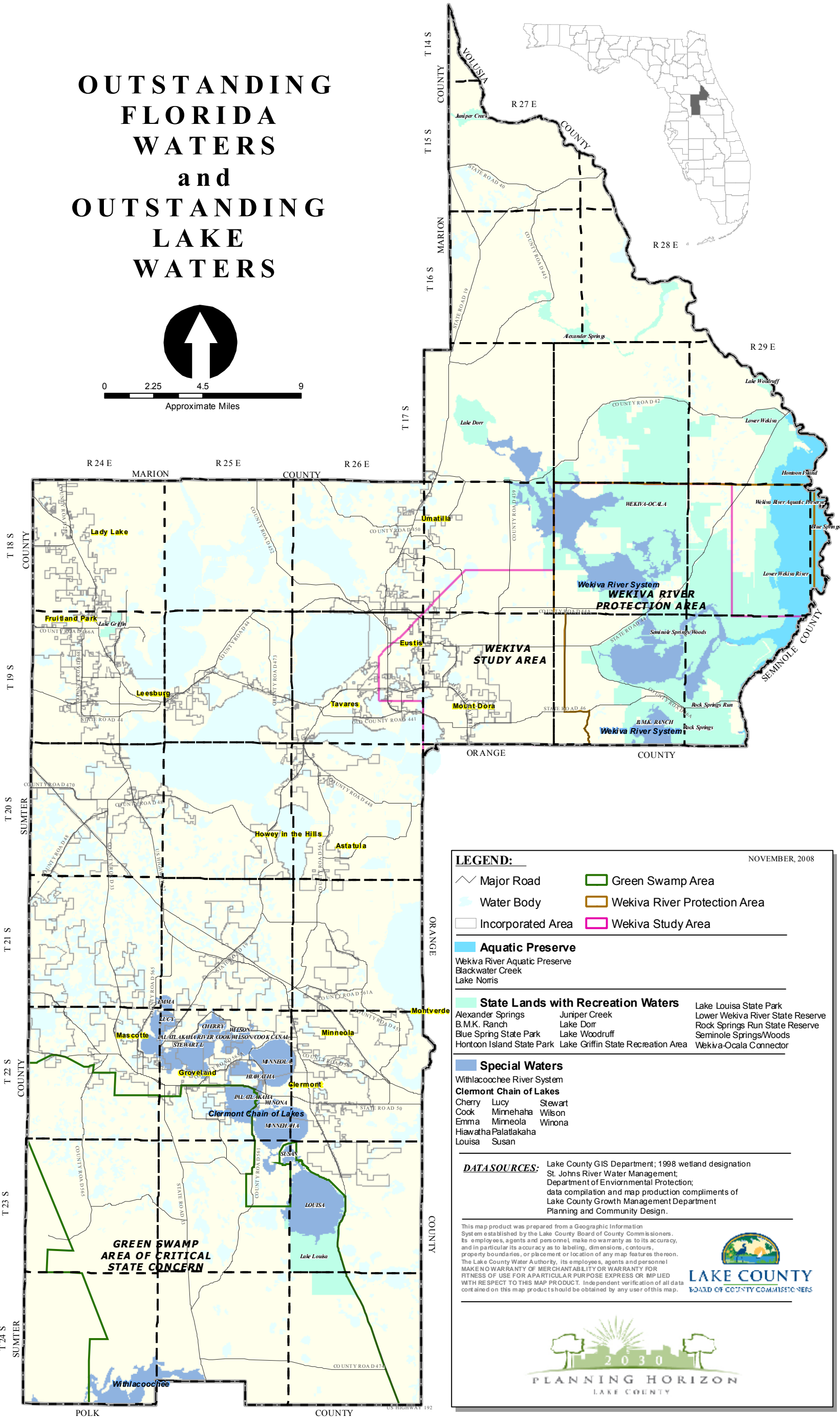
COMPREHENSIVE PLAN 2030

LAKE COUNTY FLORIDA

OUTSTANDING FLORIDA WATERS and OUTSTANDING LAKE WATERS



0 2.25 4.5 9
Approximate Miles



LEGEND: NOVEMBER, 2008

Major Road	Green Swamp Area
Water Body	Wekiva River Protection Area
Incorporated Area	Wekiva Study Area

Aquatic Preserve
 Wekiva River Aquatic Preserve
 Blackwater Creek
 Lake Norris

State Lands with Recreation Waters

Alexander Springs	Juniper Creek	Lake Louisa State Park
B.M.K. Ranch	Lake Dorr	Lower Wekiva River State Reserve
Blue Spring State Park	Lake Woodruff	Rock Springs Run State Reserve
Horton Island State Park	Lake Griffin State Recreation Area	Seminole Springs/Woods
		Wekiva-Ocala Connector

Special Waters
 Withlacoochee River System
Clermont Chain of Lakes
 Cherry Lucy Stewart
 Cook Minnehaha Wilson
 Emma Mimmola Winona
 Hiawatha Palatakaha
 Louisa Susan

DATASOURCES: Lake County GIS Department; 1998 wetland designation
 St. Johns River Water Management,
 Department of Environmental Protection,
 data compilation and map production compliments of
 Lake County Growth Management Department
 Planning and Community Design.

This map product was prepared from a Geographic Information System established by the Lake County Board of County Commissioners. Its employees, agents and personnel, make no warranty as to its accuracy, and in particular its accuracy as to labeling, dimensions, contours, property boundaries, or placement or location of any map features thereon. The Lake County Water Authority, its employees, agents and personnel MAKE NO WARRANTY OF MERCHANTABILITY OR WARRANTY FOR FITNESS OF USE FOR A PARTICULAR PURPOSE EXPRESS OR IMPLIED WITH RESPECT TO THIS MAP PRODUCT. Independent verification of all data contained on this map products should be obtained by any user of this map.

G:\Workgroups\Planning\County\Map\Comp_Plan\Future Land Use Series\FLU_Series\Outstanding Florida Waterways_11x17.mxd

FUTURE LAND USE SERIES

